

Dear Colleagues,

The Xema Corporate Group is one of the world's leading biological companies providing human tumor biomarker native proteins and corresponding monoclonal antibodies with high purity and quality. Our well-developed unique protocols and platforms enable us to provide large quantities of those biomedical reagents. Our reagents of antibody and antigen also cover the areas of neonatal disorders, inflammation, autoimmunity and serology of HBV. Please check our catalogue for a specific biomarker protein and antibody you are interested. All reagents listed in this catalog are intended for in vitro research use only and not for in vivo applications. All reagents can be supplied in both small and large quantities according to the customers' needs. For bulk orders, the total volume of reagents required can be reserved at Xema for up to ten weeks without additional charges.

In addition to our primary reagents of antibodies and antigens, Xema offers a comprehensive suite of antibody and antigen services to meet your needs. Xema produces a wide array of ready-made conjugates of our listed reagents for your direct applications. Xema also provides customers on-demand conjugation services for specific research needs. Our reagent service includes antibody conjugates for both primary and secondary antibodies, for example, monoclonal and polyclonal antibodies are conjugated to peroxidase (HRP), biotin, and various fluorescent dyes. Furthermore, we provide reagent service of matched antibody pair information for common applications include ELISA, western blotting, and immunohistochemistry.

Please review this catalog or browse our website at <http://www.xema-medica.com> to find the reagent products that meet your needs. As complimentary products, Xema provides auxiliary reagents such as conjugate stabilizer dilution buffer, stabilizers and preservatives for antibody coating of microwells, and other common reagents. Moreover, if you have a collaborative project with Xema R&D department and agree for a joint publication, we will provide you all your required reagents without any charges.

Please feel free to contact us for more details about our products and services. We will be happy to work with you, and answer any questions you may have.

Best regards
Eugenia Kostrikina, Director of Technology, Xema Group
kostrikina@xema-medica.com
www.xema-medica.com

Product List

Natural antigens and their derivatives.....	5
Human Thyroglobulin (TG) purified.....	5
Human Prolactin (PRL) standard grade.....	5
Human Trypsin (IRT) standard grade	NEW PRODUCT6
Human Uromodulin (Tamm-Horsfall protein) purified	NEW PRODUCT6
HE4 standard grade (WFDC2, WAP5)	NEW PRODUCT7
Human Prostate Specific Antigen (PSA) purified.....	7
Human CA-125 (MUC16) Antigen purified	8
Human CA242 Antigen purified	NEW PRODUCT8
Human CA-199 (sialyl-Lewis a) Antigen purified	9
Human Carcinoembryonic Antigen (CEA) purified	9
Human Alpha-Fetoprotein (AFP) highly purified	10
Human CA15-3 Antigen, standard grade.....	10
Human NSE, standard grade	NEW PRODUCT11
Human CYFRA 21-1 (Cytokeratin 19) antigen, standard grade.....	11
Human CA72-4 Antigen standard grade.....	12
Human Placental Lactogen (hPL), standard grade	NEW PRODUCT12
Human C-reactive protein (CRP) purified.....	13
Human Serum amyloid A (SAA), purified	NEW PRODUCT13
Human Myeloperoxidase (MPO) purified.....	14
Recombinant Yeast HBsAg, ayw1 subtype purified	14
Monoclonal antibodies	
Murine Monoclonal Antibodies to human IgG gamma-chain	NEW PRODUCT15
Murine Monoclonal Antibodies to human IgM mu-chain	NEW PRODUCT16
Murine Monoclonal Antibodies to Serum Albumins	NEW PRODUCT17
Murine Monoclonal Antibodies to Human Haemoglobin (Hb)	NEW PRODUCT18
Murine Monoclonal Antibodies to Human Uromodulin (Tamm-Horsfall protein, THP)	NEW PRODUCT18
Murine Monoclonal Antibodies to Hepatitis B Surface Antigen (HBs).....	18
Murine Monoclonal Antibodies to human GH.....	18
Murine Monoclonal Antibodies to human Prolactin	19
Murine Monoclonal Antibodies to human FSH/LH/HCG alpha chain	19
Murine Monoclonal Antibody to human Luteinizing Hormone, LH beta chain specific... 19	
Murine Monoclonal Antibody to human LH/ HCG, beta chain (LH/HCG)	19
Murine Monoclonal Antibody to human Follicle Stimulating Hormone (FSH)	19
Murine Monoclonal Antibodies to Human Chorionic Gonadotropin, HCG beta chain specific.....	20

Murine Monoclonal Antibodies to Human Chorionic Gonadotropin, FREE beta chain (free beta HCG)	20
Murine Monoclonal Antibody to human Thyroid Stimulating Hormone beta-subunit, TSH beta chain specific	NEW PRODUCT 21
Murine Monoclonal Antibodies to human Alpha-Fetoprotein (AFP)	22
Murine Monoclonal Antibodies to human IgE epsilon-chain.....	22
Murine Monoclonal Antibody to Progesterone.....	23
Murine Monoclonal Antibody to Testosterone.....	23
Murine Monoclonal Antibody to Cortisol	24
Murine Monoclonal Antibody to thyroxine (T4)	24
Murine Monoclonal Antibody to 17-OH Progesterone	NEW PRODUCT 25
Murine Monoclonal Antibody to human PSA free.....	25
Murine Monoclonal Antibodies to human PSA total	25
Murine Monoclonal Antibodies to antigen CA125 (ISOBM workshop TD1)	NEW PRODUCT 26
Murine Monoclonal Antibodies to carcinoembryonic antigen (CEA, ISOBM TD8 workshop)	27
Murine Monoclonal Antibodies to Polymorphic Epithelial Mucin (PEM, MUC1).....	29
Murine Monoclonal Antibodies to CA19.9	31
Murine Monoclonal Antibodies to human thyroglobulin (TG)	31
Murine Monoclonal Antibodies to CYFRA21-1	NEW PRODUCT 32
Murine Monoclonal Antibodies to HE4	NEW PRODUCT 33
Polyclonal antibodies and antisera	34
Antibodies to rabbit Ig (whole molecule)	34
Antibodies to mouse Ig (whole molecule).....	34
Rabbit anti-human Haemoglobin	34
Rabbit anti-human Uromodulin (Tamm-Horsfall Protein, THP).....	35
Rabbit anti-human IgE epsilon-chain, human IgG adsorbed	35
Rabbit Antiserum to Dihydroepiandrosterone Sulphate (DHEA-S).....	35
Goat antibody to carcinoembryonic antigen (CEA)	36
HRPO conjugated LMW hormones	36
Progesterone-11-hemisuccinyl-HRPO	36
Estradiol-6-carboxymethylloxime-HRPO.....	36
Testosterone-3-carboxymethylloxime-HRPO	36
Cortisol-3-carboxymethylloxime-HRPO.....	36
T3-CONH-HRPO	36
T4-CONH-HRPO.....	36
DHEA-3-hemisuccinyl-HRPO.....	37
17-OH-Progesterone-3-CMO-BSA.....	37

Natural antigens and their derivatives

Streptavidin - HRPO conjugate.....	37
Reagent sets.....	38
Other reagents and auxiliary components for EIA:	
- Protein A.....	41
- Protein G.....	41
- mAb to human IgG1.....	41
- mAb to human IgG2.....	41
- mAb to human IgG3.....	41
- mAb to human IgG4.....	41
- mAb to human alfa-chain IgA.....	41
- mAb to free kappa-chain human IgG.....	41
- mAb to free lambda-chain human IgG.....	41
- EIA stabilizer for tracer.....	41
- EIA sample dilution buffer.....	41
- EIA coating buffers (pH 4.1; pH 7.0; pH 9.0).....	41
- EIA stabilizer for microplates.....	41
- Additive to decrease false positives in ELISA (MOPC IgG).....	41

Natural antigens and their derivatives

Human Thyroglobulin (TG) purified

Catalogue No.	R132
Source and infection testing	Thyroid tissue, surgery, tissue extracts tested negative for HBs antigen, HCV Ab, HIV I/II Ab in tissue extract by FDA approved EIA methods.
Remark on purification method	Gel filtration and ion-exchange chromatography
Measurement of concentration and specific activity	OD280 and EIA (XEMA)
Format	Solution frozen / freeze dried
Purity data	>95 % by SDS-PAGE; essentially free of TPO
Buffer	Dried from PBS, pH 7.4–7.6, 0.05 % sodium azide
Storage	Refrigerate at +2...+8 °C for 12 months or store at -20 °C for at least 3 years
Applications	Solid phase antigen in immunoassays (coating Ag in EIA RK132 XEMA), iodination

Human Prolactin (PRL) standard grade

Catalogue No.	R206C
Source and infection testing	Pituitary glands, tissue extracts tested negative for HBs antigen, HCV Ab, HIV I/II Ab in tissue extract by FDA approved EIA methods.
Remark on purification method	Purified without immunoaffinity step
Measurement of concentration and specific activity	EIA (Xema)
Format	Solution frozen / freeze dried
Purity data	>60 % by SDS-PAGE
Buffer	Dried from PBS, pH 7.4–7.6, 0.05% sodium azide.
Storage	Frozen at -20 °C or below for at least 3 years
Applications	Calibrator in PRL assays (Xema RK206)

Natural antigens and their derivatives

Human Trypsin (IRT) standard grade		NEW PRODUCT
Catalogue No.	R242C	
Source and infection testing	Pancreatic tissue, surgery, tissue extracts tested negative for HBs antigen, HCV Ab, HIV I/II Ab in tissue extract by FDA approved EIA methods.	
Remark on purification method	Gel filtration and ion-exchange chromatography	
Measurement of specific activity	EIA (Xema)	
Format	Solution frozen / freeze dried	
Purity data	>25 % by SDS-PAGE	
Buffer	PBS, pH 8.0	
Storage	Store at -20 °C for at least 3 years	
Applications	Calibrator in IRT assays (Xema RK242)	

Human Uromodulin (Tamm-Horsfall protein) purified		NEW PRODUCT
Catalogue No.	R287	
Source and infection testing	Urine	
Remark on purification method	Gel filtration and ion-exchange chromatography	
Measurement of concentration and specific activity	OD280	
Format	Solution liquid	
Purity data	>90 % by SDS-PAGE	
Buffer	PBS, pH 7.4–7.6, 0.05 % sodium azide.	
Storage	Refrigerate at +2-8 °C for 12 months or store at -20 °C for at least 3 years	
Applications	Immunogen, calibrator for immunoassays, in vitro studies	

HE4 standard grade (WFDC2, WAP5)**NEW PRODUCT**

Catalogue No.	R239C
Source and infection testing	Ascitic fluid, ovarian carcinoma tested negative for HBs antigen, HCV Ab, HIV I/II Ab in tissue extract by FDA approved EIA methods.
Remark on purification method	Gel filtration
Measurement of concentration and specific activity	OD280 and EIA (CanAg)
Format	Solution frozen
Purity data	>25 % by SDS-PAGE
Buffer	PBS, 0,05 % azide Na, pH 7.4–7.6
Storage	Frozen at -20 °C or below for at least 3 years
Applications	Calibrator in immunoassays

Human Prostate Specific Antigen (PSA) purified

Catalogue	R221
Source and infection testing	Donor seminal fluid tested negative for HBs antigen, HCV Ab, HIV I/II Ab in tissue extract by FDA approved EIA methods.
Remarks on purification method	Salt precipitation
Measurement of concentration and specific activity	OD280, EIA (XEMA)
Format	Solution frozen
Purity data	>95 % by SDS-PAGE
Buffer	0.1M PBS, pH 7.2–7.4, 0.1 % sodium azide
Storage	Frozen at -20 °C or below; do not keep in liquid form for longer than 48 hours
Applications	Immunogen, calibrator for immunoassays (EIA RK221 XEMA), further purification, in vitro studies
Supplementary information	This product is available as sterile purified form and as standard grade form (recovery ca. 20-40 % by total protein)

Natural antigens and their derivatives

Human CA-125 (MUC16) Antigen purified

Catalogue	R222
Source and infection testing	Ascitic fluid, adenocarcinoma, single patient tested negative for HBs antigen, HCV Ab, HIV I/II Ab in tissue extract by FDA approved EIA methods.
Remarks on purification method	Purified by salt extractions and subsequent chromatography without perchloric acid treatment
Measurement of concentration and specific activity	OD280, immunoassays (Roche Elecsys, XEMA)
Format	Solution frozen
Purity data	Specific activity per mg > 100 kU/mg total protein Purity was detected by SDS-PAGE: the absence of the bands in SDS-PAGE (Coomassie R250 as dye) means the purity of the antigen CA125
Buffer	PBS, pH 7.2–7.4, 0.05 % sodium azide
Storage	Frozen at -20 °C or below
Applications	Immunogen, calibrator for immunoassays (EIA RK222 XEMA), in vitro studies
Supplementary information	This product is available as standard grade form (recovery ca. 20-40 % by total protein)
Concentration range	250-1500 kU/ml

Human CA242 Antigen purified

NEW PRODUCT

Catalogue	R243
Source and infection testing	Metastatic liver, carcinoma, single patient tested negative for HBs antigen, HCV Ab, HIV I/II Ab in tissue extract by FDA approved EIA methods.
Remarks on purification method	Gel filtration, ion-exchange chromatography. Purified without perchloric acid treatment
Measurement of concentration and specific activity	OD280, immunoassay (CanAg)
Format	Solution frozen
Purity data	Purity was detected by SDS-PAGE: the absence of the bands in SDS-PAGE (Coomassie R250 as dye) means, the purity of the antigen CA242
Buffer	PBS, pH 7.2–7.4, 3 % sucrose, 0.05 % sodium azide
Storage	Frozen at -20 °C or below
Applications	Immunogen, calibrator in immunoassays, in vitro studies
Supplementary information	This product is available as standard grade form (recovery ca. 20–40 % by total protein)
Concentration range	100–500 kU/ml

Human CA-199 (sialyl-Lewis a) Antigen purified

Catalogue	R223
Source and infection testing	Metastatic liver, carcinoma, single patient tested negative for HBs antigen, HCV Ab, HIV I/II Ab in tissue extract by FDA approved EIA methods.
Remarks on purification method	Gel filtration, ion-exchange chromatography. Purified without perchloric acid treatment
Measurement of concentration and specific activity	OD280, immunoassays (Roche Elecsys, XEMA)
Format	Solution frozen
Purity data	Purity was detected by SDS-PAGE : the absence of the bands in SDS-PAGE (Comassie R250 as dye) means, the purity of the antigen CA199
Buffer	PBS, pH 7.2–7.4, 3 % sucrose, 0.05 % sodium azide
Storage	Frozen at -20 °C or below
Applications	Immunogen, calibrator in immunoassays (EIA RK223 XEMA), in vitro studies
Supplementary information	This product is available as standard grade form (recovery ca. 20–40 % by total protein)
Concentration range	250–1000 kU/ml

Human Carcinoembryonic Antigen (CEA) purified

Catalogue	R224
Source and infection testing	Metastatic liver, carcinoma, single patient tested negative for HBs antigen, HCV Ab, HIV I/II Ab in tissue extract by FDA approved EIA methods.
Remarks on purification method	Purified using immunoaffinity column
Measurement of concentration and specific activity	OD280, immunoassays (Roche Elecsys, XEMA)
Format	Solution frozen
Purity data	>95 % by SDS-PAGE, diffuse band in the range 180–200 kD; poorly stained by Coomassie R250
Buffer	20 mM Tris, 0.1M NaCl, 0,05 % azide Na, pH 7.2–7.6 or PBS
Storage	Frozen at -20 °C or below
Applications	Immunogen, calibrator in immunoassays (EIA RK224 XEMA), in vitro studies
Supplementary information	This product is available as standard grade form (>50–80 % by SDS-PAGE, diffuse band in the range 180–200 kD; main impurities: albumin, haptoglobin) and sterile for in vitro studies (e.g. lymphocyte stimulation)

Natural antigens and their derivatives

Human Alpha-Fetoprotein (AFP) highly purified

Catalogue	R225
Source and infection testing	Cord serum tested negative for HBs antigen, HCV Ab, HIV I/II Ab in tissue extract by FDA approved EIA methods.
Remarks on purification method	Purified by special method to ensure maximal recovery of immunoreactive protein
Measurement of concentration and specific activity	OD280, immunoassays (Roche Elecsys, XEMA)
Format	Solution frozen / freeze dried
Purity data	>98 % of AFP isoforms and fragments, >92 % of single 70 kDa AFP band by SDS-PAGE
Buffer	PBS, 0,05 % azide Na, pH 7.2–7.6
Storage	Frozen at -20 °C or below
Applications	Immunogen, calibrator in immunoassays (EIA RK225 XEMA), in vitro studies
Supplementary information	This product is also available as standard grade form (not less than 40 % content of AFP band in SDS-PAGE. Albumin and prealbumin are the main impurities) for further purification

Human CA15-3 Antigen, standard grade

Catalogue	R229C
Source and infection testing	Human fluids tested negative for HBs antigen, HCV Ab, HIV I/II Ab in tissue extract by FDA approved EIA methods.
Remarks on purification method	High speed centrifugation, salt precipitation, delipidization
Measurement of concentration and specific activity	EIA (CanAg)
Format	Solution liquid
Purity data	not applicable
Buffer	1M NaCl, 1 % Triton X100, 0.1 % azide Na
Storage	Refrigerate at +2...+8 °C for 12 months
Applications	Immunogen, further purification, calibrator in immunoassays
Supplementary information	This product is unavailable as purified form
Concentration range	5–10 kU/ml

Human NSE, standard grade	NEW PRODUCT
----------------------------------	--------------------

Catalogue	R234C
Source and infection testing	Human tissue tested negative for HBs antigen, HCV Ab, HIV I/II Ab in tissue extract by FDA approved EIA methods.
Remarks on purification method	Ion exchange
Measurement of concentration and specific activity	BSA method
Format	Solution liquid
Purity data	not applicable
Buffer	0.2M KCl, 10 mM MgCl ₂ , 15 mM Tris, pH 6, 0.05 % sodium azide
Storage	Refrigerate at +2...+8 °C for 12 months
Applications	Immunogen, further purification, calibrator in immunoassays
Supplementary information	This product is unavailable as purified form

Human CYFRA 21-1 (Cytokeratin 19) antigen, standard grade
--

Catalogue	R236C
Source and infection testing	Human mammary carcinoma cell line MCF7
Remarks on purification method	Non processed induced cell culture medium
Measurement of concentration and specific activity	Immunoassay (Roche Elecsys)
Format	Solution frozen
Purity data	not applicable
Buffer	Cell culture medium as is
Storage	Frozen at -20 °C or below
Applications	Further purification, immunoassay calibration
Supplementary information	This product is unavailable as purified form
Concentration range	5–10 ug/ml

Natural antigens and their derivatives

Human CA72-4 Antigen standard grade

Catalogue	R244C
Source and infection testing	Metastatic liver, carcinoma, single patient tested negative for HBs antigen, HCV Ab, HIV I/II Ab in tissue extract by FDA approved EIA methods.
Remarks on purification method	Purified without perchloric acid treatment
Measurement of concentration and specific activity	Immunoassay (Roche Elecsys)
Format	Solution frozen
Purity data	>50–80 % by SDS-PAGE, diffuse band in the range 40 kD; main impurity: albumin
Buffer	PBS, 0,05 % azide Na, pH 7.2–7.6
Storage	Frozen at -20 °C or below
Applications	Immunogen, calibrator in immunoassays, in vitro studies
Supplementary information	This product is unavailable as purified form
Concentration range	50–500 kU/ml

Human Placental Lactogen (hPL), standard grade

NEW PRODUCT

Catalogue	R246C
Source and infection testing	Human placenta
Remarks on purification method	Purified using immunoaffinity column
Measurement of concentration and specific activity	Immunoassay (DRG)
Format	Solution frozen
Purity data	ca 50 %
Buffer	100 mM Tris, acetate Na, 0.5 M NaCl, 1 % azide Na
Storage	Frozen at -20 °C or below
Applications	Further purification, immunoassay calibration
Supplementary information	This product is unavailable as purified form
Concentration range	300 ug/ml–700 ug/ml

Human C-reactive protein (CRP) purified

Catalogue	R250
Source and infection testing	Septic plasma tested negative for HBs antigen, HCV Ab, HIV I/II Ab in tissue extract by FDA approved EIA methods.
Remarks on purification method	Purified by specific ligand affinity
Measurement of concentration and specific activity	Total protein by OD280 nm, immunoassay (EIA XEMA)
Format	Solution liquid
Purity data	>95 % by SDS-PAGE; specifically depleted from Serum amyloid A
Buffer	0.3 M NaCl, 20 mM Tris, pH 8.0, 0.1 % azide Na
Storage	Refrigerated at +2...+8 °C for at least 3 years May form a reversible precipitate. Do not freeze!
Applications	Calibrator in immunoassays, immunization, in vitro studies
Supplementary information	This product is unavailable as standard grade form

Human Serum amyloid A (SAA), purified**NEW PRODUCT**

Catalogue	R251
Source and infection testing	Septic plasma tested negative for HBs antigen, HCV Ab, HIV I/II Ab in tissue extract by FDA approved EIA methods.
Remarks on purification method	Purified by specific ligand affinity
Measurement of concentration and specific activity	Total protein by OD280 nm
Format	Solution liquid
Purity data	>95 % by SDS-PAGE; specifically depleted from C-reactive protein
Buffer	0.3M NaCl, 20 mM Tris, pH 8.0, 0.1 % azide Na
Storage	Refrigerated at +2...+8 °C for at least 3 years May form a reversible precipitate. Do not freeze!
Applications	Calibrator in immunoassays, immunization, in vitro studies
Supplementary information	This product is unavailable as standard grade form

Natural antigens and their derivatives

Human Myeloperoxidase (MPO) purified

Catalogue No.	R133
Source and infection testing	Donor leukocyte mass, tissue extracts tested negative for HBs antigen , HCV Ab, HIV I/II Ab in tissue extract by FDA approved EIA methods.
Remarks on purification method	Affinity purified
Measurement of concentration and specific activity	OD280
Format	Solution frozen
Purity data	>95 % by SDS-PAGE; essentially free of lactoferrin
Buffer	0.5 M NaCl, 20 mM Tris, pH 7.6
Storage	Store at -20 °C or -70 °C for at least 3 years
Applications	Solid phase antigen in immunoassays (coating Ag in EIA RK133 Xema), in vitro research

Recombinant Yeast HBsAg, ayw1 subtype purified

Catalogue	RY01
Source	Pichia pastoris yeast, recombinant
Remarks on purification method	Purified without immunoaffinity step with maximal recovery of immunoreactivity
Measurement of concentration and specific activity	Lowry, immunoassays (Abbott Murex EIA)
Format	Solution frozen
Purity data	Two bands of monomeric plus dimeric forms give combined >95 % by SDS-PAGE
Buffer	0.15 M NaCl, 10 mM Tris, pH 7.5, 0.05 % Na azide
Storage	Refrigerate up to 1 month, freeze for longer period Strictly avoid freeze thaw cycles.
Applications	Solid phase antigen in immunoassay, calibrator in immunoassay, in vitro studies, HRPO conjugation
Supplementary information	This product is available as HRPO conjugate and sterile for in vitro studies

Monoclonal antibodies

Presentation	0.1–0.5 mg
Concentration range	0.5–10 mg/ml
Purity data	>95 % by SDS-PAGE
Buffer	0.15 M NaCl, 10 mM Tris, pH 7.5, 0.05 % sodium azide OR PBS with 0.05 % azide Na
Measurement of concentration	OD280
Remarks on purification method	Ion exchange
Storage	Refrigerate at +2...+8 °C for not longer than 12 months.
Format	Solution liquid

Murine Monoclonal Antibodies to human IgG gamma-chain

NEW PRODUCT

Catalogue No/Clones See table below

Isotype	IgG1
Immunogen	Purified natural IgG
Specificity and affinity data	All antibodies selected for high affinity for human IgG whole molecule, negative for IgM. None of the clones shows considerable selectivity for IgG subclass.
Applications	Immunoassays; WB.
Supplementary information	Products are available as HRPO conjugates (e.g. EIA RK101-RK106, RK131, RK132 Xema)

Clone #	Fragment specificity*	Recognition of animal IgG				XR / h IgA
		canine	feline	bovine	porcine	
XA6						-
XG1						+++
XG3						ND
XG4		+	++	+++	+++	+++
XG6	Fc					ND
XG7	Fc					ND
XG8	Fc					+
XG9	Fc					ND
XG14	Fc			+	+	+
XG23	Fc					ND
XG33	Fc					ND
XG34						+
XG36						-

Monoclonal antibodies

Clone #	Fragment specificity*	canine	feline	bovine	porcine	XR / h IgA
XG47	Fc					ND
XG55						-
XG56	Fc					-
XG69	Fc	++	+	++		+
XG74						++
XG76						-
XG78				+++	+++	++
XG99			+++	+++	+++	+++
XG100			+++	++	+++	+++
XG114			++	++		+++

* preferred binding

Murine Monoclonal Antibodies to human IgM mu-chain

NEW PRODUCT

Catalogue No/Clones See table below

Isotype IgG1

Immunogen Purified natural IgM

Specificity and affinity data All antibodies selected for high affinity for human IgM whole molecule, negative for IgG and IgA

Applications Immunoassays; WB.

	IgG	IgM	IgA	ca- nine IgG	canine IgA (+IgG?)	canine IgM	feline IgG?	flgA	flgM	por- cine serum
X610		++++		neg	neg	neg	2+?	neg	neg	neg
X611	+?	++++		2+	neg	3+	3+	neg	neg	neg
X612		++++		2+	neg	1+	2+?	neg	neg	neg
X613		++++		2+	1+	2+	2+	neg	neg	neg
X614		++		1+	neg	1+?	2+	neg	neg	neg
X615	+?	++++		3+	2+	3+	3+	+-	neg	neg
X616	+?	++	+	4+	3+	4+	4+	1+	neg	++

Murine Monoclonal Antibodies to Serum Albumins**NEW PRODUCT****Catalogue No/Clones** See table below

Isotype IgG1

Immunogen Purified natural IgM

Specificity and affinity data All antibodies selected for high affinity for human or bovine serum albumin

Applications Immunoassays; WB.

mAb	human (HSA)	cow (BSA)	swine	goat	sheep	horse	dog	cat	rabbit	rat
X01	+	+++	+++	++++	+	+	+	++	+	+
X02	+	+++	+++	++++	+	+	+	++	++	neg
X03	neg	+++	++++	++++	+++	+++	+	+	++++	neg
X04	++++	+-	++++	+-	neg	+-	+++	neg	++++	ND
X06	neg	++++	Neg	+-	neg	+-	+-	++	neg	neg
X07	+	+++	+++	+++	+++	++	neg	+	neg	neg
X12	++++	++++	++++	++++	++++	neg	++++	++++	++++	ND
X13	+++	+++	+++	+++	+	neg	+++	+++	+-	++
X18	neg	++++	++	++++	+-	neg	neg	+++	+	++++
X20	neg	++++	++	neg	+-	neg	neg	neg	neg	neg
X40	neg	+++	neg	+++	+++	neg	+	+-	neg	neg
X418	++++	++++	++	+++	++	ND	++	++	ND	ND

Monoclonal antibodies

Murine Monoclonal Antibodies to Human Haemoglobin (Hb)

NEW PRODUCT

Catalogue No/Clones See table below

Immunogen Purified human haemoglobin

Clone Id	Isotype	species specificity*	pair	remark
X302	IgG1	human specific	matched with X328	for FOB test
X305	IgG1	human specific	matched with AS281	for FOB test
X317	IgG1	nonspecific		
X328	IgM	human specific	matched with X302	for FOB test

*non-reactive to bovine, porcine, ovine, equine and avian Hb

Murine Monoclonal Antibodies to Human Uromodulin (Tamm-Horsfall protein, THP)

NEW PRODUCT

Catalogue No/Clones XT11, XT12, XT16

Isotype IgG1

Immunogen Purified human uromodulin

Specificity and affinity data All antibodies selected for species specificity (non-reactive to canine, feline, bovine and equine THP)

Applications Immunoassays; WB.

Murine Monoclonal Antibodies to Hepatitis B Surface Antigen (HBs)

Catalogue /Clone XB10

Isotype IgG1

Immunogen Purified natural HBs antigen

Specificity and affinity data High affinity

Applications Capture in immunoassays; WB, HRPO conjugation

Murine Monoclonal Antibodies to human GH

Catalogue /Clone XGH6
XGH7

Isotype IgG1

Immunogen Growth hormone, purified without immunoaffinity step

Specificity and affinity data High affinity

Applications XGH7 antibodies of solid phase matches with XGH6 (EIA RK204 XEMA)

Murine Monoclonal Antibodies to human Prolactin

Catalogue /Clones	XP1, PRL2
Isotype	IgG1
Immunogen	Prolactin, purified without immunoaffinity step
Specificity and affinity data	High affinity
Applications	Immunoassays, affinity purification of Prolactin

Murine Monoclonal Antibodies to human FSH/LH/HCG alpha chain

Catalogue /Clones	XF1, XL7
Isotype	IgG1
Immunogen	Purified natural FSH alpha chain
Specificity and affinity data	High affinity
Applications	Capture matches XL1, XF2 (EIA RK202, RK203)

Murine Monoclonal Antibody to human Luteinizing Hormone, LH beta chain specific

Catalogue /Clones	XL1
Isotype	IgG1
Immunogen	Purified natural LH
Specificity and affinity data	High affinity
Applications	XL1 antibodies of solid phase matches with XF1 (EIA RK2022, Xema)

Murine Monoclonal Antibody to human LH/ HCG, beta chain (LH/HCG)

Catalogue /Clones	XL3, XL12, XL24, XL99
Isotype	IgG1
Immunogen	Purified natural LH
Specificity and affinity data	High affinity; cross-reactive to HCG beta
Applications	XL1 antibodies of solid phase matches with XF1 (EIA RK2022, Xema)

Murine Monoclonal Antibody to human Follicle Stimulating Hormone (FSH)

Catalogue /Clones	XF2
Isotype	IgG1
Immunogen	Purified natural FSH
Specificity and affinity data	High affinity
Applications	XF2 antibodies of solid phase matches with XF1 (EIA RK2032, Xema)

Monoclonal antibodies

Murine Monoclonal Antibodies to Human Chorionic Gonadotropin, HCG beta chain specific

Catalogue /Clone	XH51
Isotype	IgG1
Immunogen	Purified natural HCG
Specificity and affinity data	High affinity No cross reactivity with LH, TSH, FSH
Applications	Immunoassay XH51 antibodies of solid phase matches with XF1 (EIA RK205, XEMA), WB

Murine Monoclonal Antibodies to Human Chorionic Gonadotropin, FREE beta chain (free beta HCG)

Catalogue /Clone	XH95 XH220
Isotype	IgG
Immunogen	Purified natural beta HCG
Specificity and affinity data	High affinity No cross reactivity with LH, TSH, FSH
Applications	Immunoassay XH95 antibodies of solid phase matches with XH220 (EIA RK235, XEMA)

Murine Monoclonal Antibody to human Thyroid Stimulating Hormone beta-subunit, TSH beta chain specific **NEW PRODUCT**

Catalogue /Clones XTB1 XTB63
 XTB2 XTB64
 XTB3 XTB73
 XTB9 XTB75
 XTB10 XTB80
 XTB11 XTB82
 XTB17 XTB94
 XTB32

Isotype IgG1

Immunogen Purified natural TSH beta

Specificity and affinity data High affinity

Applications: immunoassay
 pairs, see table below

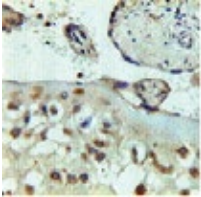
coat/tracer	XTB1*	XTB2*	XTB3*	XTB9*	XTB10*	XTB11*	XTB32*
XTB1		*					
XTB2							
XTB3							
XTB9		*					
XTB10						weak	
XTB11					weak		
XTB17							
XTB32		*					
XTB33							
XTB63							
XTB64							
XTB73			weak				
XTB75							
XTB77					weak	weak	
XTB80					weak	weak	
XTB82							
XTB94					weak	weak	

* XR HCGbeta in one step protocol

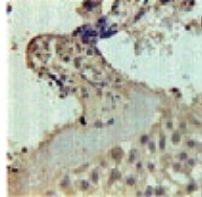
Monoclonal antibodies

Murine Monoclonal Antibodies to human Alpha-Fetoprotein (AFP)

Catalogue /Clone	XFP2 XA2
Isotype	IgG1
Immunogen	Purified natural AFP
Specificity and affinity data	High affinity
Applications	XA2 antibodies of solid phase matches with XFP2 (EIA RK225 XEMA), WB, IHC



Immunostaining with XFP2 of placenta



Immunostaining with XFP2 of placenta

Murine Monoclonal Antibodies to human IgE epsilon-chain

Catalogue /Clone	XTE4 (epsilon chain) X5D4 X4F4
Isotype	IgG1
Immunogen	Purified myeloma IgE (epsilon; alfa)
Specificity and affinity data	High affinity
Applications	XTE4 antibodies of solid phase matches with AS200 (EIA RK200 XEMA), WB X5D4 antibodies of solid phase matches with X4F4

Murine Monoclonal Antibody to Progesterone

Catalogue /Clone	XM207
Isotype	IgG2b
Immunogen	Progesterone-11(HS)-BSA
Specificity and affinity data	High affinity, $K_a = 3.0 \times 10^9 \text{ M}^{-1}$
Applications	Capture antibodies in immunoassays matches T207X (EIA RK207 XEMA)

Cross-reactivity data

Steroid	Cross-reactivity, % 50 % displacement of Progesterone-11-125-Iodine)	
Progesterone		100
17-Hydroxyprogesterone		1.0
11-Hydroxyprogesterone		25
5-alpha-pregnane-3,20 dione		10.5
Corticosterone		0.01
Pregnenolone		0.9
Deoxycorticosterone	0.30	
Deoxycortisol		0.03
Cortisol		0.002

Murine Monoclonal Antibody to Testosterone

Catalogue /Clone	XM209
Isotype	IgG2a
Immunogen	Testosterone-3-CMO-BSA
Specificity and affinity data	High affinity, $K_a = 2.5 \times 10^9 \text{ M}^{-1}$
Applications	Capture antibodies in immunoassays matches T209X (EIA RK209 XEMA)

Cross-reactivity data

Steroid	Cross-reactivity, % 50 % displacement of Testosterone-3-125-Iodine)	
Testosterone		100
5-alpha-dehydrotestosterone	16	
Androstendiol		1.0
Androstendione		0.4
Androsterone		< 0.1
Dehydroepiandrosterone		< 0.1
Progesterone		< 0.1
Estradiol, Estriol		< 0.01
Cortisol, Pregnenolone		< 0.01

Monoclonal antibodies

Murine Monoclonal Antibody to Cortisol

Catalogue /Clone	XM210
Isotype	IgG2a
Immunogen	Cortisol-3(CMO)-BSA
Specificity and affinity data	High affinity, $K_a = 1.7 \times 10^9$ Mexp-1
Applications	Capture antibodies in immunoassays matches T210X (EIA RK210 XEMA)

Cross-reactivity data

Steroid	Cross-reactivity, % (50 % displacement of cortisol-3-125-Iodine)
Cortisol	100
11-Deoxycortisol	0.9
Prednisolone	5.6
Corticosterone	0.6
11-Deoxycorticosterone	< 0.1
Progesterone	< 0.1
17-Hydroxyprogesterone	< 0.1
Testosterone, Estradiol, Estriol	< 0.1
Danazol	< 0.01

Murine Monoclonal Antibody to thyroxine (T4)

Catalogue /Clone	XM212
Isotype	IgG2a
Immunogen	T4-3-CONH-BSA
Specificity and affinity data	High affinity, $K_a = 5.1 \times 10^9$ Mexp-1
Applications	Capture antibodies in immunoassays matches T212X (EIA RK212 (total T4), RK2142 (free T4) XEMA) NOT APPLICABLE FOR RIA

Cross-reactivity data

Substance	Cross-reactivity, % (50 % displacement of T4-125-Iodine)
L-Thyroxine	100
D-Thyroxine	30
T3	0.5

Murine Monoclonal Antibody to 17-OH Progesterone

Catalogue /Clone	XM175
Isotype	IgG1
Immunogen	Progesterone-11(HS)-BSA
Specificity and affinity data	High affinity
Applications	Capture antibodies in immunoassays matches T217X

Cross-reactivity data

Steroid	Cross-reactivity, %
17-Hydroxyprogesterone	100
Progesterone	<1.0
11-Deoxycorticosterone	2.3

Murine Monoclonal Antibody to human PSA free

Catalogue /Clone	PS1
Isotype	IgG1
Immunogen	Purified natural PSA
Specificity and affinity data	High affinity
Applications	Immunoassays (EIA RK231 XEMA)

Murine Monoclonal Antibodies to human PSA total

Catalogue /Clone	PS2 PS5 PS6
Isotype	IgG1
Immunogen	Purified natural PSA
Specificity and affinity data	High affinity
Applications	PS2 antibodies of solid phase matches with PS6 (EIA RK221 (PSA total) XEMA); matches with PS1 (EIA RK231 (PSA free) XEMA), IHC



Immunostaining with PS2: benign prostatic adenoma



Immunostaining with PS2: prostatic adenocarcinoma

Monoclonal antibodies

Murine Monoclonal Antibodies to antigen CA125 (ISOBM workshop TD1)

NEW PRODUCT

Catalogue /Clone X52, X75, X306, X325, X189, X181, X192

Epitope specificity of CA125 monoclonal antibodies was determined by competitive binding to enzyme-labelled human single patient CA125 antigen. Antigen: natural human CA125 (lot CA23) isolated from single patient ovarian tumour ascitic fluid; purification method did not include affinity binding to monoclonal antibodies.

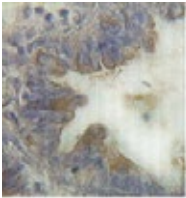
Conjugate of human CA125 lot CA23 with HRPO enzyme (Faizyme, Lansdowne, RSA) was performed by peroxidase method and was diluted 1:500 by EIA buffer.

The results show that mAb X306 clearly belongs to A1 (OC125 like) epitope group; mAb X75 and X325 show high homology to B1 (M11 like) group.

Recommended pairs for immunoassays are:

X306 solid	X52-HRPO conjugate
X325 solid	X52-HRPO conjugate
X306 solid	X325-HRPO conjugate
X189 solid	X192-HRPO conjugate

Anti-CA125 mAbs application: IHC



Immunostaining with X325:
ovarian cancer



Immunostaining with X325:
lang adenocarcinoma

Cross-inhibition of Xema CA125 mAbs and reference mAbs from TD1 workshop.

Rows – liquid phase antibodies; columns – immobilized antibodies.

Inhibition percentages (see table) were calculated by dividing the average OD in actual wells by the average OD in control wells.

	Epitope group
X181	B1
X189	A1
X192	B1

**Murine Monoclonal Antibodies to carcinoembryonic antigen
(CEA, ISOBM TD8 workshop)**
Catalogue /Clone 2C5, 3C1, 3C2, 3C4, 3C5, 3C6, 3C8, 3C13

Isotype IgG1

Immunogen Purified natural CEA

Specificity and affinity data High affinity

Applications IHC (clones 1C3, 1C7, 1C10, 2C5, 3C4, 3C6, 3C7, 3C9), EIA (3C6 antibodies of solid phase matches with 3C1 (EIA RK224 XEMA))

Antibody	Isotype	Species	Gold group	Remark
2C5	IgG1	mouse	1	recommended for IHC only
3C1	IgG1	mouse	4? 4"	recommended as tracer
3C2	IgG1	mouse	1	1C6 unlike
3C4	IgG1	mouse	4	recommended for IHC
3C5	IgG1/ IgG3?	mouse	1	
3C6	IgG1	mouse	1	recommended as capture
3C8	IgG1	mouse	5	Specially recommended for lateral flow method
3C13	IgG1	mouse	1*	

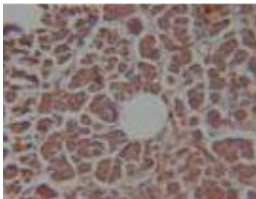
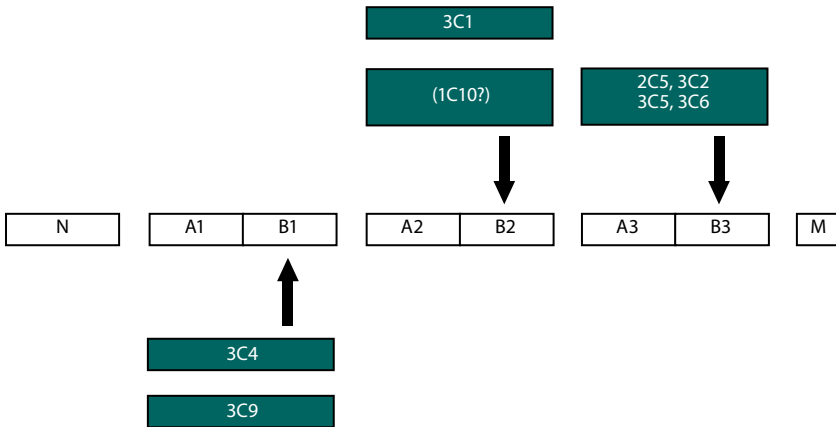
* epitope group unknown, group 1 is the closest

Monoclonal antibodies

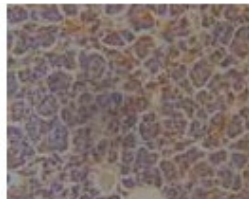
anti-CEA mAbs application: IHC in metastasis of pancreatic carcinoma:

Clone	Brightness	Cytoplasmic staining	Membrane staining	Background staining	Staining of mucus	Pictures
2C5	100	3+	2+	1+	2+	1
3C4	70	2+	1+	1+	2+	2
3C6	80	3+	2+	2+	2+	3
3C7	70	2+	1+	1+	2+	4
3C9	90	3+	2+	1+	2+	5

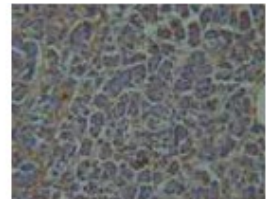
Specificity of anti-CEA mAbs according to NABM scheme



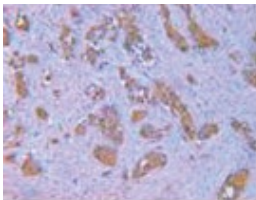
Pic. 1



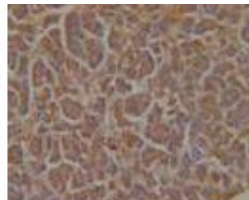
Pic. 2



Pic. 3



Pic. 4



Pic. 5

Murine Monoclonal Antibodies to Polymorphic Epithelial Mucin (PEM, MUC1)

Catalogue /Clone	X19 X108 X23 X77
Isotype	IgG1
Immunogen	Purified natural MUC1
Specificity and affinity data	High affinity
Applications	X108 antibodies of solid phase matches with X19 (EIA RK226, RK227 XEMA), IHC

MUC1 (also known as PEM – polymorphic epithelial mucin) is an ubiquitous epithelial cell surface antigen expressed on wide variety of epitheliocytes. This antigen is also shed from the cells into body fluids including saliva and normal serum.

MUC1 molecule has a complex structure including extracellular 20 amino acid tandem repeat (VNTR region). This part of the molecule is most commonly used as the target for mAb binding. Within VNTR, the most popular locus for mAb recognition, is 7 amino acid frame TRPAPGS. All well known reference mAbs (DF3, b12, B27.29) are directed to the epitope within this narrow frame.

The natural mucins purified from tumors can contain extraordinarily high contents of MUC1 peptide but little to none CA15-3. Certainly, recombinant MUC1 peptides never contain “full” CA15-3 antigen.

The fine differences between anti-MUC1 mAbs have no serious influence on their application in immunohistochemistry, immunoblotting, immuno-imaging or cytofluorometry provided the MUC1 itself is the target molecule.

No MUC1 mAb can replace the mammary specific mAbs eg 115D8 in cell sorting or stem cell enrichment.

None of MUC1 mAbs can be considered as ‘mammary-specific’.

To design the immunoassay for MUC1 in serum, there is three different strategies:

1. To license the reference mAbs (present owner – Fujirebio Inc.) This was done by most of the major IVD makers.
2. To construct a new pair from matched mAbs and prove its clinical relevance on serum panels. Certainly this assay cannot be called “CA15-3”. This was done eg by Roche with their MCA assay.
3. To “copy” the specificity of the existing reference assays by combining two mAbs which “mimic” the specificity of the reference ones.

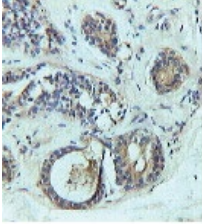
This approach was used by CanAg. Their capture mAb is practically identical to 115D8; and tracer mAb strongly resembles DF3. This assay can be considered as the good copy of the original CA15-3.

Monoclonal antibodies

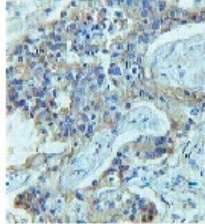
XEMA offers different mAbs to MUC1 which are able to “mimic” the specificity of the reference ones:

1. Mab X19 recognizes preferably normally processed MUC1, similarly to mAb b12 (use in MCA Roche). In serum assays, this mAb can be used either in “self sandwich” or as the capture or as the tracer.
2. mAbs X23 and X77 prefer linear peptide epitope and is similar to reference mAb B27.29.
3. Mab X108 is almost identical to mAb DF3.

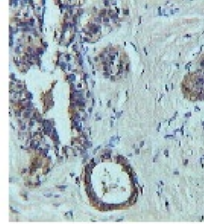
anti-MUC1 mAbs applications in IHC:



Immunostaining with X19 of breast fibrocystic mastopathy (++)



Immunostaining with X108 of prostate carcinoma (++)

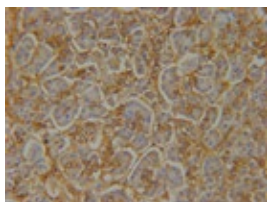


Immunostaining with X23 of breast fibrocystic mastopathy (++)

Murine Monoclonal Antibodies to CA19.9

Catalogue /Clones	X91, X90
Isotype	IgM
Immunogen	Affinity pure CA19-9
Specificity and affinity data	High affinity
Format	Solution frozen
Storage	Store frozen at -20 °C
Applications	Immunoassay (EIA RK223 XEMA), IHC
Supplementary information	This product is unavailable as HRPO conjugate

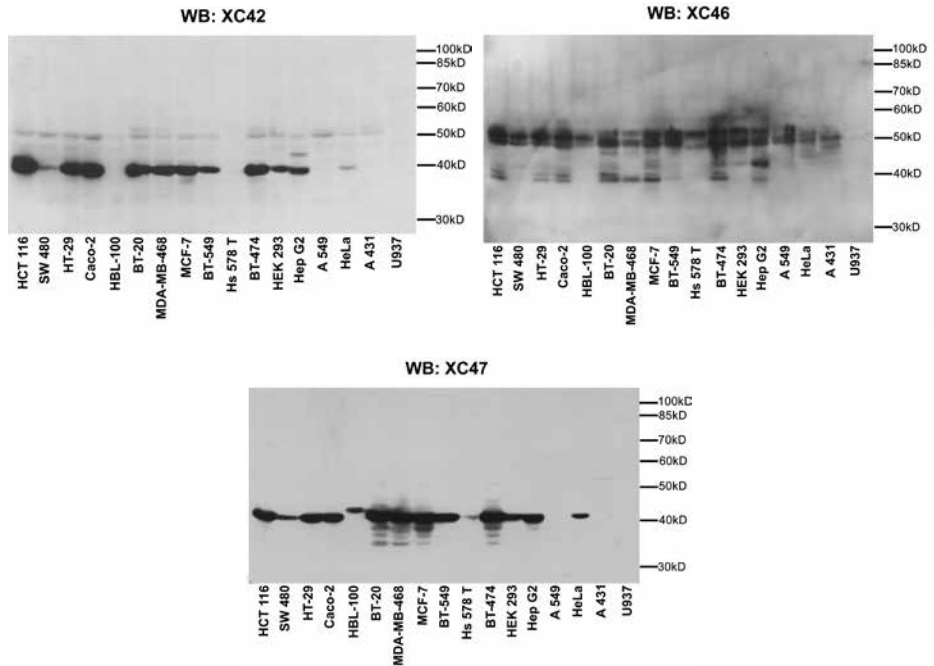
anti-CA19.9 mAbs application: IHC Normal Pancreas

**Murine Monoclonal Antibodies to human thyroglobulin (TG)**

Catalogue /Clone	X5E6 X5F9 XT21 XT22 XT23
Isotype	IgG1
Immunogen	Purified natural thyroglobulin
Remarks on purification method	Gel filtration
Specificity and affinity data	High affinity
Applications	X5F9 vs X5E6 forms the sandwich with low interference to human auto-anti TG

Monoclonal antibodies

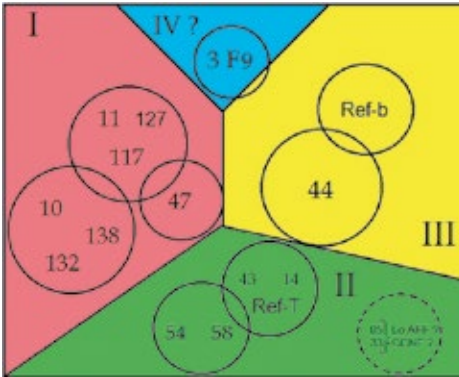
Murine Monoclonal Antibodies to CYFRA21-1		NEW PRODUCT
Catalogue /Clone	XC42, XC46, XC47, XC48, XC59, XC88, XC78, XC90, XC89	
Isotype	IgG1 XC46 - IgG2b	
Immunogen	CYFRA21-1	
Specificity and affinity data	High affinity XC42, XC48, XC59, XC88, XC90 – KS19.1 homology (cross-inhibition) XC46 – high affinity mAb binding soluble cytokeratins in broad variety of cell lines XC47, XC78, XC89 – KS19.2 homology (cross-inhibition)	
Applications	Immunoassay (EIA RK236 XEMA), WB XC42 matching with XC46	



Murine Monoclonal Antibodies to HE4**NEW PRODUCT**

Catalogue /Clone	X11 X14 X43 X58 X117 X132 X138
Isotype	IgG1
Immunogen	Human natural HE4
Specificity and affinity data	High affinity
Applications	Immunoassay (EIA RK239 XEMA), WB

Epitope mapping



Pairs recommended

	Group	X117	X138	X14	X43	X58
X117	1	no	no	best	best	OK
X138	1	no	no	OK	OK	OK
X14	2	OK	OK	no	no	no
X43	2	OK	OK	no	no	no
X58	2	OK	OK	no	no	no

Polyclonal antibodies and antisera

Presentation	0.1–0.5 mg
Concentration range	0.5–10 mg/ml
Buffer	0.15 M NaCl, 10 mM Tris, pH 7.5, 0.05 % sodium azide OR PBS with 0.05 % azide Na
Measurement of concentration.	OD280
Remarks on purification method	Ion exchange
Storage	Refrigerate at +2...+8 °C for not longer than 12 months.
Format	Solution liquid

Antibodies to rabbit Ig (whole molecule)

Catalogue /Clone	AS301
Host animal	Goat or sheep
Immunogen	Purified rabbit gamma-globulin
Remarks on purification method	affinity purification on immobilized antigen
Specificity and affinity data	High affinity, may cross-react to other mammalian Ig
Applications	Anti-species capture in immunoassay (EIA RK208, RK211, RK213, RK215, RK217 Xema)

Antibodies to mouse Ig (whole molecule)

Catalogue /Clone	AS302
Host animal	Goat or sheep
Immunogen	Purified rabbit gamma-globulin
Remarks on purification method	affinity purification on immobilized antigen
Specificity and affinity data	High affinity, may cross-react to other mammalian Ig
Applications	Anti-species capture in immunoassay (EIA RK208, RK211, RK213, RK215, RK217 Xema)

Rabbit anti-human Haemoglobin

Catalogue /Clone	AS281
Immunogen	Purified human haemoglobin
Remarks on purification method	Affinity purification on immobilized antigen
Specificity and affinity data	Cross-reactive to other mammalian species
Applications	Immunoassay for FOB (vs Xema mAbs X305)

Rabbit anti-human Uromodulin (Tamm-Horsfall Protein, THP)

Catalogue /Clone	AS287
Immunogen	Purified human THP
Remarks on purification method	Affinity purification on immobilized antigen
Specificity and affinity data	Cross-reactive to other mammalian species
Applications	Immunoassay for THP (vs Xema mAbs)

Rabbit anti-human IgE epsilon-chain, human IgG adsorbed

Catalogue /Clone	AS200
Immunogen	Purified human myeloma IgE
Remarks on purification method	Affinity purification on immobilized antigen
Specificity and affinity data	negative adsorption
Applications	Immunoassay (EIA RK200 Xema), immunoblotting

Rabbit Antiserum to Dihydroepiandrosterone Sulphate (DHEA-S)

Catalogue /Clone	AS215
Immunogen	DHEA-3-hemisuccinyl-BSA
Specificity and affinity data	100 % crossreactivity to DHEA
Applications	Immunoassay (EIA RK215 XEMA)

Goat antibody to carcinoembryonic antigen (CEA)

Catalogue /Clone	AS224
Immunogen	Purified human carcinoembryonic antigen from tumor tissue
Remarks on purification method	affinity purification on immobilized antigen
Applications	Immunoassay; immunochromatographic rapid test

HRPO conjugated LMW hormones

Source material	Highly purified hormone derivative; HRPO, RZ>3.0
Remarks on synthesis method	Depleted from unconjugated hormone by gel filtration
Measurement of specific activity	EIA titration. Titer not less than 1:5000 in direct binding EIA
Format	Solution liquid
Buffer	0.1M PBS, 0.1 % Tween-20, 0,5 % solubilized casein, contains dye
Storage	Refrigerate at +2...+8 °C for not longer than 12 months.
Presentation	0.1 ml

Progesterone-11-hemisuccinyl-HRPO

Catalogue /Clone	T207X
Applications	Tracer in immunoassay (EIA RK207 XEMA)

Estradiol-6-carboxymethyloxime-HRPO

Catalogue /Clone	T208X
Applications	Tracer in immunoassay (EIA RK208 XEMA)

Testosterone-3-carboxymethyloxime-HRPO

Catalogue /Clone	T209X
Applications	Tracer in immunoassay (EIA RK209 XEMA)

Cortisol-3-carboxymethyloxime-HRPO

Catalogue /Clone	T210X
Applications	Tracer in immunoassay (EIA RK210 XEMA)

T3-CONH-HRPO

Catalogue /Clone	T211X
Applications	Tracer in immunoassay (EIA RK211 (T3 total), RK213 (T3 free) XEMA)

T4-CONH-HRPO

Catalogue /Clone	T212X
Applications	Tracer in immunoassay (EIA RK212 (T4 total), RK2142 (T4 free) XEMA)

DHEA-3-hemisuccinyl-HRPO

Catalogue /Clone	T215X
Applications	Tracer in immunoassay (EIA RK215 XEMA)

17-OH-Progesterone-3-CMO-BSA

Catalogue /Clone	T217X
Applications	Tracer in immunoassay (EIA RK217 XEMA)

Streptavidin - HRPO conjugate

Catalogue /Clone	T300X
Source material	From <i>Streptomyces avidinii</i> . Affinity purified.
Remarks on synthesis method	Conjugated by periodate method. Purified by gel filtration.
Measurement of specific activity	EIA titration. Titer not less than 1:10000 in direct binding EIA
Format	Solution liquid
Buffer	PBS, pH 7.2–7.4, 0.02 % ProClin 300
Storage	Refrigerate at +2...+8 °C for not longer than 12 months.
Applications	Tracer in immunoassay; immunoblotting and immunohistochemistry

Reagent sets

Reagent sets are designed for construction of solid phase EIAs in OEM format. Xema supplies the listed immunoreagents and the manufacturing protocols. Optionally, XEMA supplies also the components or concentrated form of postcoating solutions, calibrator and conjugate diluents.

Cat#	Reagent set	Component #	Explanation	Sold separately as reagent	Remark
RK131	anti-TPO EIA	A131	Coating Ag	no	Unavailable as separate reagent
		CX131	Calibrator concentrate set	no	Unavailable as separate reagent
		T100X	Conjugate concentrate	Various	
RK132	anti-TG EIA	A132	Coating Ag	R132	
		CX132	Calibrator concentrate set	no	Unavailable as separate reagent
		T100X	Conjugate concentrate	Various	
RK133	anti-MPO EIA	A133	Coating Ag	no	
		CX133	Calibrator concentrate set	no	Unavailable as separate reagent
		T100X	Conjugate concentrate	A6*	
RK200	Total IgE EIA	A200	Coating mAb	XTE4	
		C200X	Calibrator concentrate	no	Unavailable as separate reagent
		T200X	Conjugate concentrate	AS200*	
RK2012	TSH EIA	A2012	Coating mAb	Various	
		C201X	Calibrator concentrate	R201C	
		T2012X	Conjugate concentrate	Various	
RK202	LH EIA	A202	Coating mAb	XL1	
		C202X	Calibrator concentrate	no	Unavailable as separate reagent
		T202X	Conjugate concentrate	Various	
RK203	FSH EIA	A203	Coating mAb	XF2	
		C203X	Calibrator concentrate	no	Unavailable as separate reagent
		T203X	Conjugate concentrate	XF1*	
RK204	GH EIA	A204	Coating mAb	XGH7	
		C204X	Calibrator concentrate	R204C	
		T204X	Conjugate concentrate	XGH6*	
RK205	HCG EIA	A205	Coating mAb	XH51	
		C205X	Calibrator concentrate	no	Unavailable as separate reagent
		T205X	Conjugate concentrate	Various	Unavailable as separate reagent

Cat#	Reagent set	Component #	Explanation	Sold separately as reagent	Remark
RK221	PSA total EIA	A221	Coating mAb	PS2	
		C221X	Calibrator concentrate	R221C	
		T205X	Conjugate concentrate	PS6*	
RK222	CA125 EIA	A222	Coating mAb	Various	
		C221X	Calibrator concentrate	R222C	
		T222X	Conjugate concentrate	Various	
RK223	CA199EIA	A223	Coating mAb	X91	
		C223X	Calibrator concentrate	R223C	
		T223X	Conjugate concentrate	no	Unavailable as separate reagent
RK224	CEA EIA	A224	Coating mAb	3C6	Unavailable as separate reagent
		C224X	Calibrator concentrate	R224	
		T224X	Conjugate concentrate	3C1*	
RK225	AFP EIA	A225	Coating mAb	XA2	
		C225X	Calibrator concentrate	R225C	
		T225X	Conjugate concentrate	XFP2*	
RK226	CA15-3 EIA (MUC1)	A226	Coating mAb	Various	
		C226X	Calibrator concentrate	R226	
		T226X	Conjugate concentrate	Various	
RK231	PSA free EIA	A221	Coating mAb	PS2	
		C221X	Calibrator concentrate	R221C	
		T2312X	Conjugate concentrate	PS1*	
RK207	Progesterone EIA	A302	First coating Ab	AS302	
		A207	Second coating Ab	XM207	
		C207X	Calibrator concentrate	no	Unavailable as separate reagent
		T207X	Conjugate concentrate	T207X	
		S207X	Conjugate buffer additive concentrate	no	Unavailable as separate reagent
RK209	Testosterone EIA	A302	First coating Ab	AS302	
		A209	Second coating Ab	XM209	
		C209X	Calibrator concentrate	C209X	Unavailable as separate reagent
		T209X	Conjugate concentrate	T209X	
		S209X	Conjugate buffer additive concentrate	S209X	Unavailable as separate reagent
RK210	Cortisol EIA	A302	First coating Ab	AS302	
		A210	Second coating Ab	XM210	
		C210X	Calibrator concentrate	C210X	Unavailable as separate reagent
		T210X	Conjugate concentrate	T210X	
		S210X	Conjugate buffer additive concentrate	S210X	Unavailable as separate reagent
RK211	T3 EIA	A301	First coating Ab	AS301	
		A211	Second coating Ab	AS211	Unavailable as separate reagent
		C211X	Calibrator concentrate	C211X	Unavailable as separate reagent
		T211X	Conjugate concentrate	T211X	
		S211X	Conjugate buffer additive concentrate	S211X	Unavailable as separate reagent

Reagent sets

Cat#	Reagent set	Component #	Explanation	Sold separately as reagent	Remark
RK212	T4 EIA	A302	First coating Ab	AS302	
		A2122	Second coating Ab	XM212	
		C212X	Calibrator concentrate	C212X	Unavailable as separate reagent
		T212X	Conjugate concentrate	T212X	
		S212X	Conjugate buffer additive concentrate	S212X	Unavailable as separate reagent
RK214	T4 EIA free	AS302	First coating Ab	AS302	
		A2142	Second coating Ab	XM212	
		C214X	Calibrator concentrate	C212X	Unavailable as separate reagent
		T214X	Conjugate concentrate	T212X	Unavailable as separate reagent
		S214X	Conjugate buffer additive concentrate	S214X	Unavailable as separate reagent
RK215	DHEA-S EIA	A301	First coating Ab	AS301	
		A215	Second coating Ab	AS215	
		C215X	Calibrator concentrate	C215X	Unavailable as separate reagent
		T215X	Conjugate concentrate	T215X	
		S215X	Conjugate buffer additive concentrate	S215X	Unavailable as separate reagent
RK217	17-OH-Progesterone EIA	A301	First coating Ab	AS301	
		A217	Second coating Ab	AS217	
		C217X	Calibrator concentrate	C217X	Unavailable as separate reagent
		T217X	Conjugate concentrate	T217X	
		S217X	Conjugate buffer additive concentrate	S217X	Unavailable as separate reagent
RK250	CRP ultrasensitive EIA	A250	Coating mAb	XA250	Unavailable as separate reagent
		C250X	Calibrator concentrate	R250	
		T250X	Conjugate concentrate	XT250*	Unavailable as separate reagent
RK242	IRT EIA	A242	Coating mAb	Various	
		C242X	Calibrator concentrate	R242C	
		T242X	Conjugate concentrate	Various *	
RK234	NSE EIA	A234	Coating mAb	No	Unavailable as separate reagent
		C234X	Calibrator concentrate	R234C	
		T234X	Conjugate concentrate	No	Unavailable as separate reagent
RK239	HE4 EIA	A239	Coating mAb	Various	
		C239X	Calibrator concentrate	R239C	
		T239X	Conjugate concentrate	Various	

Other reagents and components for EIA:

- **Protein A**
- **Protein G**
- **mAb to human IgG1**
- **mAb to human IgG2**
- **mAb to human IgG3**
- **mAb to human IgG4**
- **mAb to human alfa-chain IgA**
- **mAb to free kappa-chain human IgG**
- **mAb to free lambda-chain human IgG**

- **EIA stabilizer for tracer**
- **EIA sample dilution buffer**
- **EIA coating buffers (pH 4.1; pH 7.0; pH 9.0)**
- **EIA stabilizer for microplates**
- **Additive to decrease false positives in ELISA (MOPC IgG)**

